

HIRUMA Kazuyo:

Memories of Water and Earth

September 7 – 21, 2018



1. Soaring 飛翔, 2013
H16.5" x D8.6" x W22.5", H42 x D22 x W57cm
Stoneware
Awarded at Kobe Biennale 2013

New York – Dai Ichi Arts, Ltd. is pleased to announce its inaugural exhibition with the contemporary Japanese ceramic artist HIRUMA Kazuyo 昼馬和代, which will be the first time her award-winning ceramic has work shown in New York. *HIRUMA Kazuyo: Memories of Water and Earth* will feature a series of works that highlight Hiruma's investigation of how memory and erosion come forth in aquatic and terrestrial forms. Ceramic sculptures depicting water and earth inspire nuanced explorations of how these two natural forces interact with time.

The works presented are fastidiously constructed yet remain anchored in natural phenomena. Hiruma layers thin sheets of clay horizontally or vertically to create each work, finally glazing and firing the ceramic after spending a month or two building it. The artist's practice stands out from contemporary ceramic work bound in tradition through its play with both space and movement. Dynamic and impressive in size, Hiruma's work diverges from the smaller objects usually on display in a Japanese *tokonoma*, or reception room. *HIRUMA Kazuyo: Memories of Water and Earth* reflects Dai Ichi Arts' commitment to working with artists to promote ceramic works that are accessible in meaning yet rich in visual language.



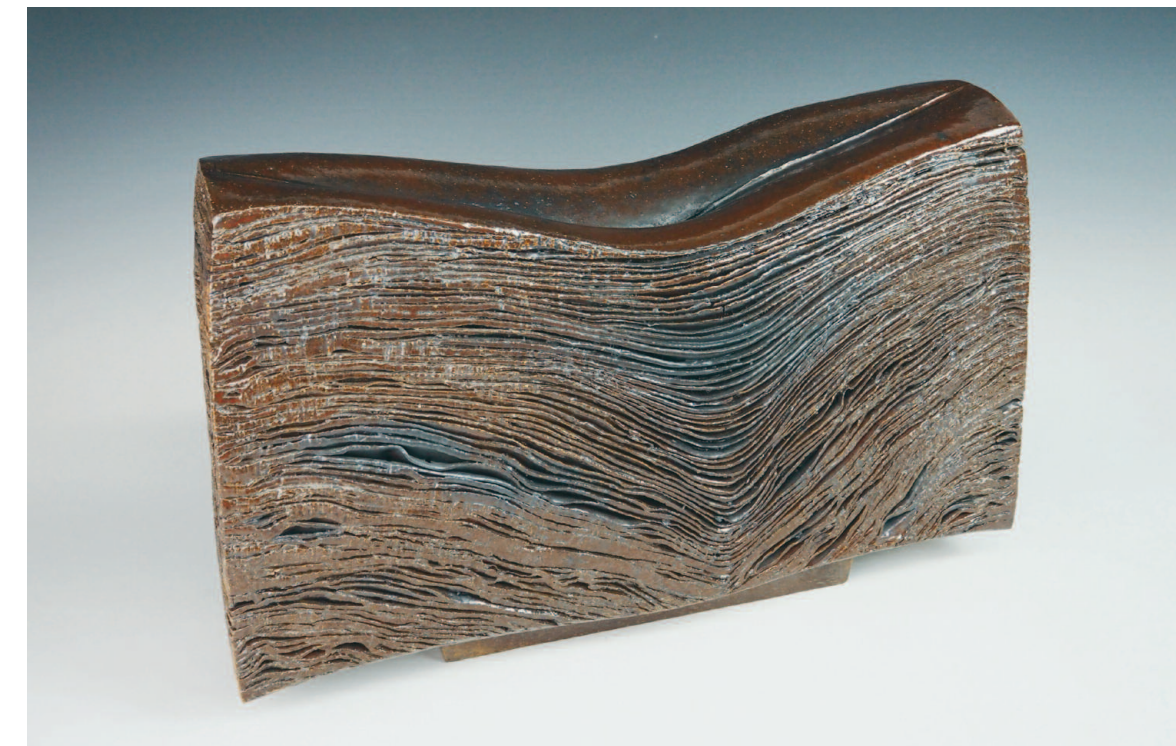
2. The Trail of Wind 風の軌跡, 2014
H23.2" x D7.4" x W15.3", H59 x D19 x W39cm
Stoneware



3. Midnight Sun Boat III 白夜の舟 III, 2011
H6.8" x D5.9" x W23", H17.5 x D15 x W58.5cm
Stoneware



4. Blue Vessel 青い器, 2018
H5.9" x Dia7", H15 x Dia18cm
Stoneware



5. Saltation 躍動, 2004
H10" x D5.9" x W19.2", H25.5 x D15 x W49cm
Stoneware



ASIA WEEK 2018 FALL

HIRUMA Kazuyo :
Memories of Water and Earth

Sep 7 – 21, 2018

Opening Reception:
September 7th, 5-8pm

Dai Ichi Arts, Ltd.

18 East 64th Street, Suite 1F,
New York, NY 10065
Tel: 212-230-1680
Cell: 917-435-9473
daiichiarts@yahoo.com

www.daiichiarts.com



Dai Ichi Arts, Ltd.

18 East 64th Street, Suite 1F
New York, NY 10065
Tel: 212-230-1680
Cell: 917-435-9473

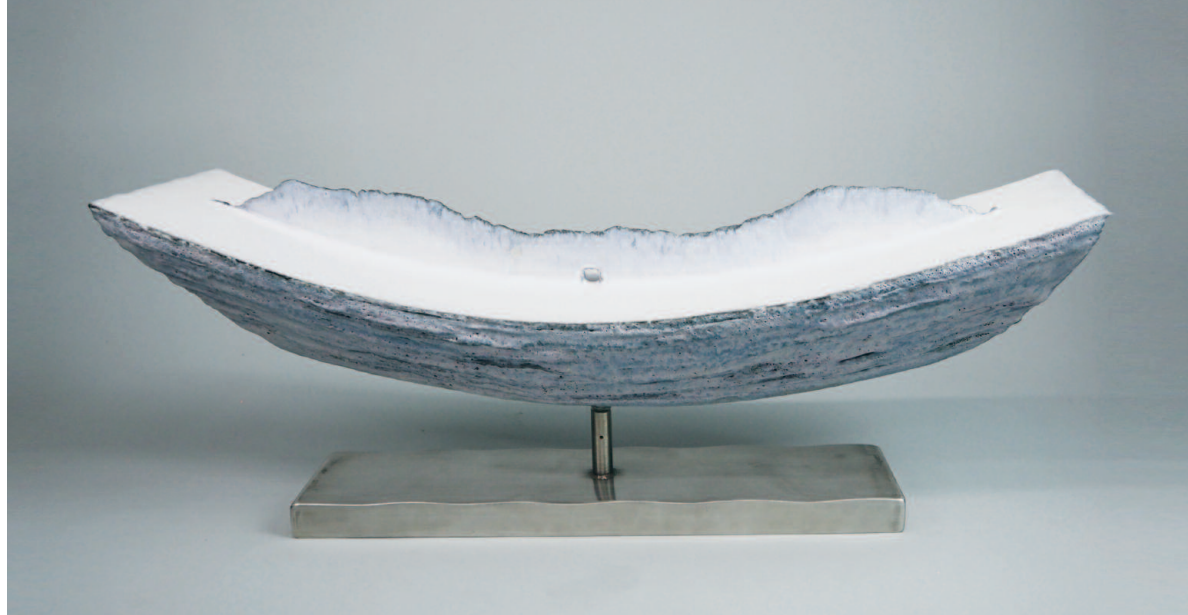
HIRUMA Kazuyo 昼馬和代 (b.1947)
began her artistic career in 1976, when she worked under the guidance of ceramic artists Sugaki and Hisano Mizuno in Osaka. Prior to committing to her ceramic practice, Sakai City-born Hiruma worked as a graphic designer for a decade. Hiruma founded her own kiln in 1988, and her ceramic work exploring natural phenomena has since exhibited and received awards internationally. Hiruma has participated in the Japan Crafts Exhibition, International Ceramic Art Festival Mino, Asahi Ceramic Art Exhibition, Itami Craft Exhibition, Kyoto Craft Exhibition, Japan Craft Exhibition, Mashiko Ceramic Competition, Chozo Ceramic Art Exhibition, Taiwan Ceramic Biennale, Kikuchi Biennale, Kobe Biennale, and Wellington Ceramics Exchange in New Zealand. Hiruma's work is held in numerous international collections, including the Wellington City Collection in New Zealand, Japanese Embassy of New Zealand, New Taipei City Yingge Ceramics Museum in Taiwan, and Sakai City Collection in Osaka.



6. Layering Flower Vase II 積層花器 II, 2015
H7.4" x D11" x W5.9", H19 x D28 x W15cm
Stoneware

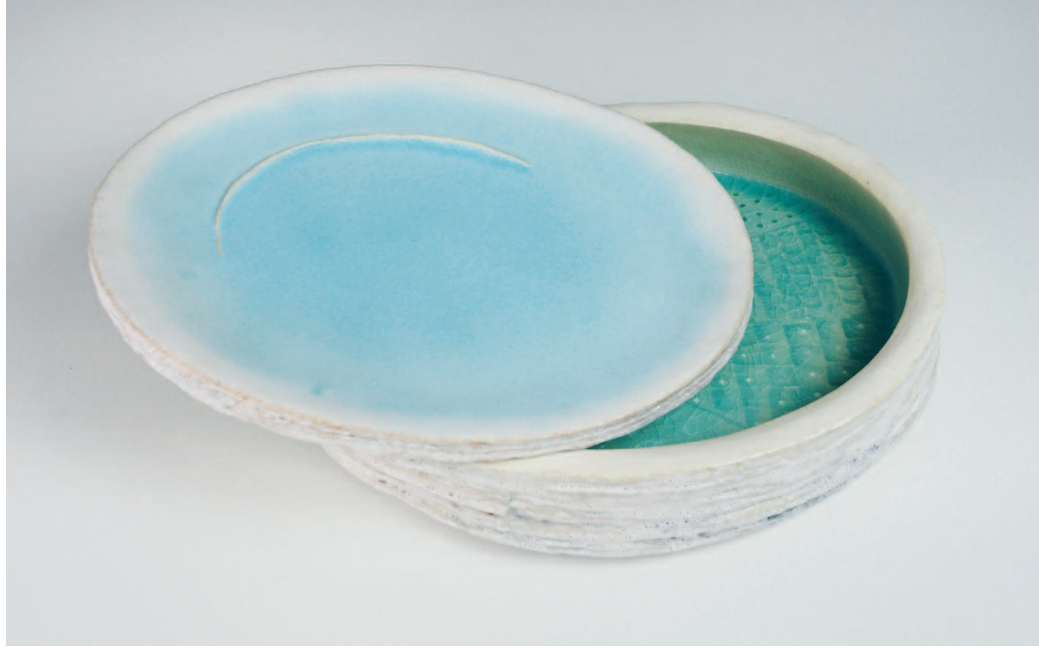


7. Layering Flower Vase I 積層花器 I, 2015
H12" x D5.5" x W3.9", H30.5 x D14 x W10cm
Stoneware



8. Midnight Sun Boat II 白夜の舟 II, 2015
H9.8" x D7.4" x W26", H25 x D19 x W66cm
Stoneware with Stainless Pedestal

9. Swell うねり, 2011
H8" x D7.8" x W30", H20.5 x D20 x W76cm
Stoneware



10. Box "Memory of Blue" 陶箱・青い記憶, 2010
H3" x D13.9" x W11.6", H8 x D35.5 x W29.5cm
Stoneware

11. Midnight Sun I Boat 白夜の舟 I, 2011
H15.3" x D7.4" x W26", H39 x D19 x W66cm
Stoneware with Stone Pedestal

